

Francis AV 4.0

Combo couch



COUCHES

Usò Frequente

Gynecology
Urology
Ambulatory
Ultrasound diagnostic
Infirmary
Emergency
Endoscopic examinations
Minor surgery



2 in 1 Couch
for multifunctional
examination and
uro/gynaecological mode

**VERSATILITY &
SAFETY**

multifunction device for
specialistic activities



www.gardhenbalance.it



VERSATILE & SAFE

The **multifunctional examination table** is extremely versatile and it can be used for a wide range of specialist visits. Thanks to its three sections, it is possible to adjust the position of the patient in order to ensure greater comfort during visit. Furthermore, the robust construction and solid design of the bed ensure the safety of the patient during medical manoeuvres.

3 SECTIONS

Patient's surface in 3 sections, two of them are electrically adjustable through electric actuators..

RELEASE LEVERS

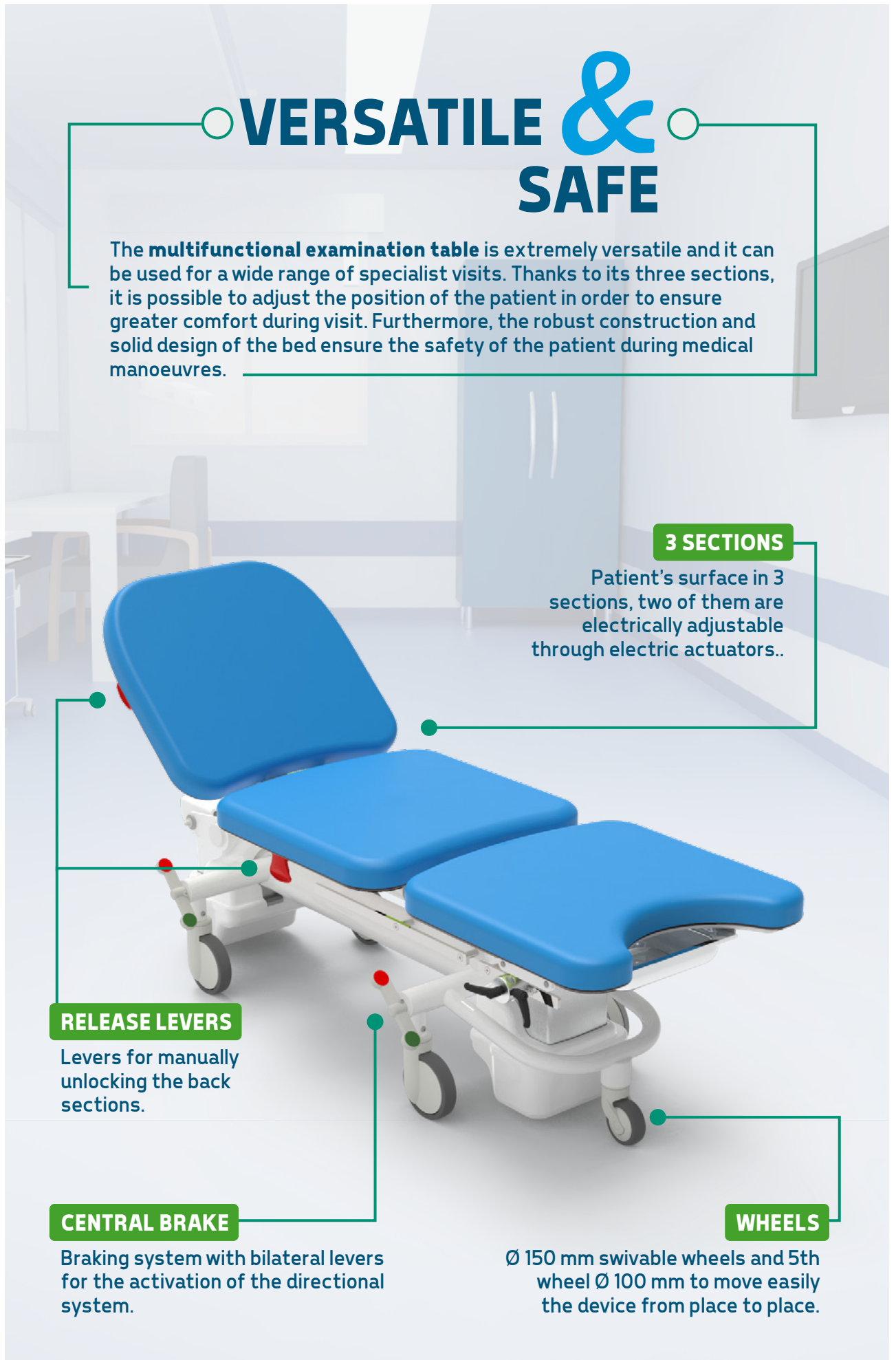
Levers for manually unlocking the back sections.

CENTRAL BRAKE

Braking system with bilateral levers for the activation of the directional system.

WHEELS

Ø 150 mm swivable wheels and 5th wheel Ø 100 mm to move easily the device from place to place.





Furthermore this device was also designed for **gynecology**, it will only take to equip the device with the following accessories: Stirrups and stainless steel bowl for gynecological visits. The stirrups are extremely ergonomic and having also levers for manual and quick adjustment. The tray is made out of stainless steel. It ensures easy cleaning and disinfection, making it safe and durable over time.

MIDDLE SECTION

Electrically adjustable section to have a perfect patient's positioning.

STIRRUPS

Located on DIN bars and manually adjustable.

STAINLESS STEEL TRAY

Removable and easy to sanitize.



Standard equipment

- The lying surface is divided in 3 sections.
- Reinforced frame, made out in steel painted with epoxy paint enriched with antibacterial. The colour is customizable upon request.
- The backrest can be adjusted eletrtrically.
- The middle section can be adjusted eletrtrically.
- Motorized height adjustment through electric columns.
- Motorized Trendelenburg and reverse Trendelenburg through telescopic columns with rectangular section - Equipment code AC152.
- Quick release of the backrest, it allows to perform the cpr manoeuvre - Equipment code AC8L.
- 150 mm antistatic and swivable wheels. The directional braking system can
- be activated by bilateral pedals;
- 5a wheel diameter 100 mm which provides greater stability and improves the directionality of the device when transporting the patient from one department to another. It facilitates thrusting and driving, reducing the effort required to move.
- Centralized directional braking system made out in galvanized steel - Equipment code AC7L2G.
- Leg pads on DIN bar - Equipment code AC110/1
- Removable stainless steel tray for the collection of organic waste. - Equipment code AC155.
- Upholstery: with anti-bacterial properties, flame retardant class 1IM, antimicrobial, ecologic, latex free, phtalate free. Resistant to: alcohol, sodium hypochlorite max 5%, a wide range of common used detrgent, liquid and other biological fluids - Equipment code AC87/1.
- High density expanded foam mattress.
- Handset with 8 buttons for the activation of the motors.
- Equipotential node.

Do you want to change the color of the upholstery and frame?

Frame or click the QR codes and find out how to personalize the device by consulting our color cards*.

*If no preference is expressed, the device will be supplied with the available color.

Upholstery
Lethearette

Upholstery
Silicon

Frame



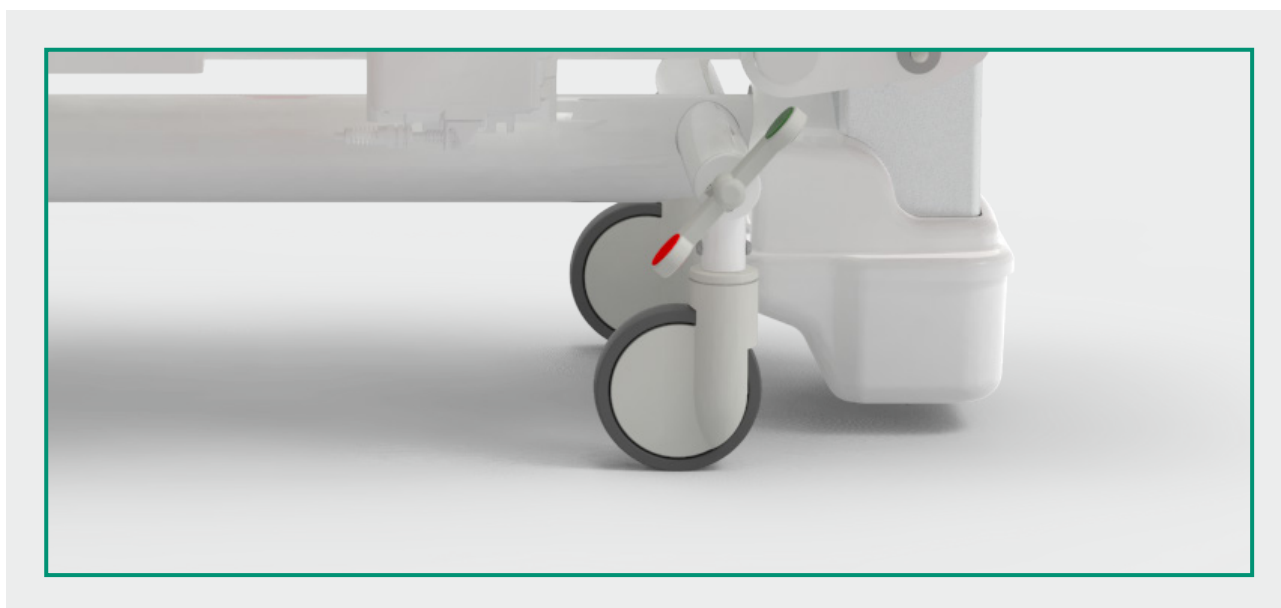
Do you want to implement the device?

Scan the QR code and check out the entire range of accessories available for this device.



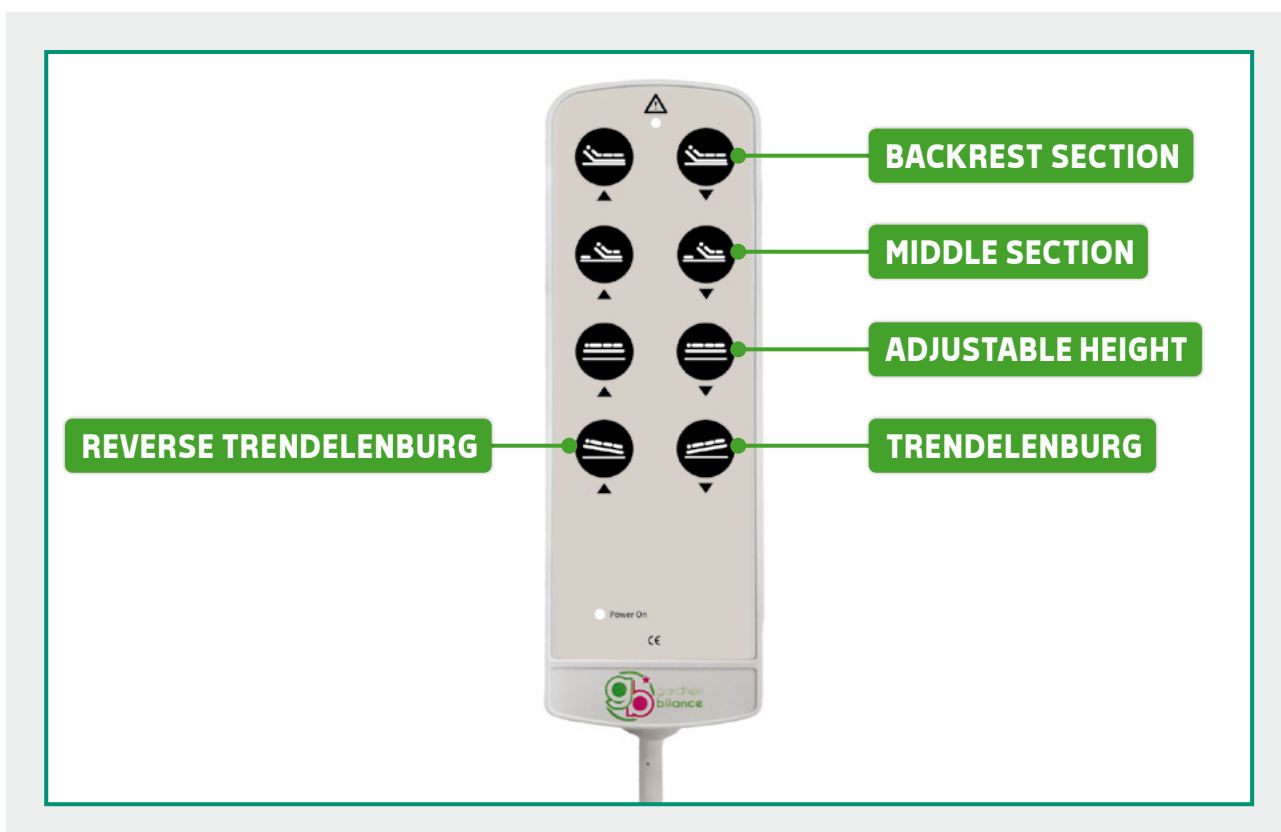
Braking system

Centralized directional braking system made out in galvanized steel, it can be activated through bilateral pedals - Equipment code AC7L2G..



8 buttons handset

Couch's movements are controlled by a handset with a 3,5mtl coiled cable. The handset is user friendly and has visual pictograms useful for partially sighted person. Insulation IP66.





Stainless steel tray

The tray can be easily removed from the couch for cleaning and sanitizing, ensuring the proper safety standard to every patients. Since stainless steel is a strong and durable material, it can withstand intensive use without deteriorating or rusting. Can be used to collect liquids, waste and other materials during gynecological procedures - Equipment Code AC155.



Middle section

The electrically adjustable mid-section allows the nursing staff to adjust the patient's position for a better view and easier access to the area of interest. This can also be extremely useful for inspection and biopsy procedures where clear view and easy access are essential.





Movements



TRENDELENBURG



REVERSE TRENDELENBURG



Movements



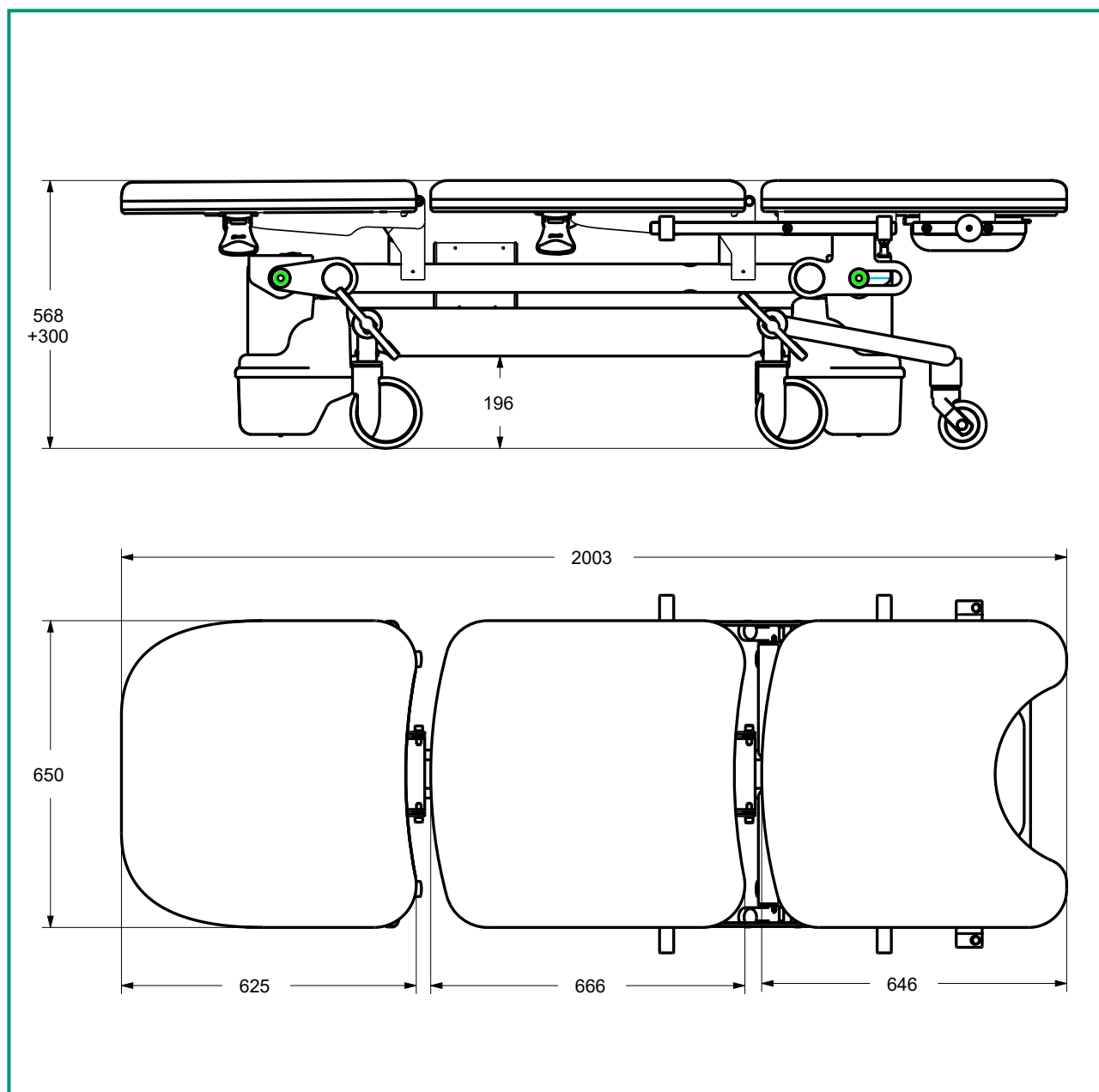
ADJUSTABLE HEIGHT



**GOOD POSTURE FOR MANY CLINICAL NEEDS.
MICROMETRIC ADJUSTABLE SURFACE THROUGH A SPECIAL HANDSET.**



Dimensions





Technical sheet

CND/EMDN code	V080603
UDI-DI di base	805771740LVISKK
GMDN code	34134
N. progressivo/R	2440429/R
ID Code	GB0038.SP-4 Painted steel
Inteded use	Multifunctional couch
Manufacturer	GARDHEN BILANCE SRL
Spare parts availability	10 years
Overall weight	80 kg
Wheels	Wheels Ø 150 mm with central brake and directional system activated through bilateral pedals
Controls	Handset
Power	Multitension 100-240 Vac 50-60 Hz
Main cord	Schuko or others upon request
Electric motors	Low voltage (24 V)
Max electrical input	4A
Insulation	IP44
Max load capacity	200 kg
Safety working load	235 kg

Main cord



Type F
Schuko



Type L
16A



Type I
Australia



Type B
Canada
and USA



Type G
UK plug

Gardhen Balance S.r.l.

Via G. Luraghi c/o Consorzio Il Sole - lotto S - 80038 Pomigliano d'Arco (NA) - Italia

Tel. +39.081.8692160 pbx - Fax +39.081.8692460

E-mail: info@gardhenbalance.it - PEC: gardhenbalance@pec.it

www.gardhenbalance.it / Follow us     

Images reproduced in this sheet are for reference only and dimensional values are nominal. It is the manufacturer's right to make changes to the designs without prior notice. Refer to the optional components catalog and/or commercial proposals for identification of standard equipment and selection of any additional components. In case of discrepant data, the contents of the commercial proposals shall prevail. In the event that preferences are not expressed regarding the colors of the devices ordered, the same, will be made in the colors shown in the data sheet/brochure.

For regulatory references, please refer to the user manual and declaration of conformity.

Dep. EN_306 rev. 22/04/2024

